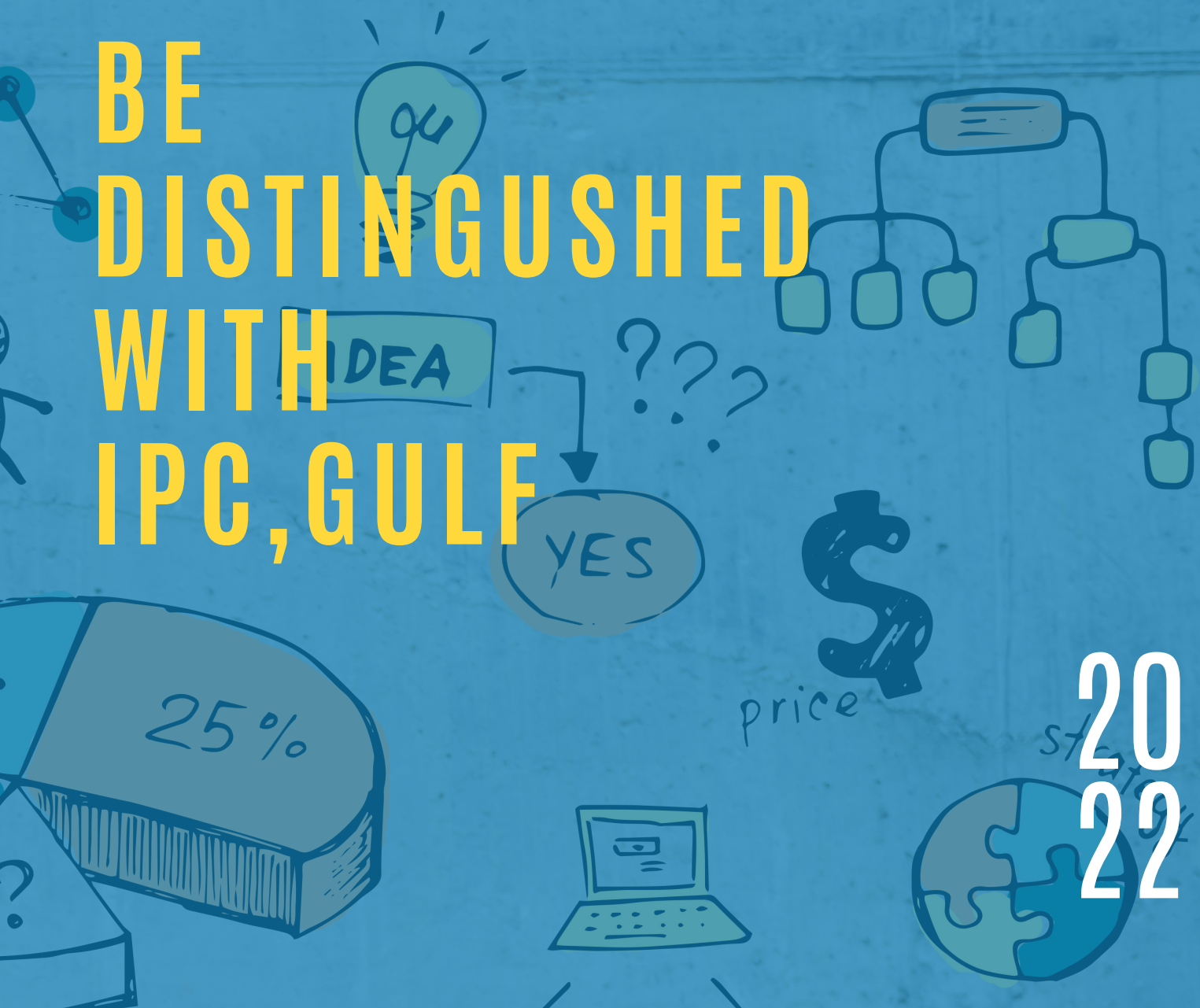


# IS YOUR PROFILE COMPELLING?

BE  
DISTINGUISHED  
WITH  
IPC, GULF

20  
22





# Why are EXTRA-CURRICULAR activities important?

High school students eager to stand out in the college application process often participate in a litany of extracurricular activities hoping to strengthen their chances of admission.

The college admissions team carefully considers the application with attention to extracurricular activities. It is an accepted concept that the quality of a college hopeful's extracurricular activities matters more than the number of activities the student participates in. The accomplishments in an activity provide a framework for understanding the student's holistic development.

The admission team typically seek students with significant extracurricular accomplishments in addition to strong academic credentials.

Some ways to distinguish oneself in the college admissions process include winning awards in competitions, getting elected to leadership positions, producing compelling research or beautiful art and performing meaningful community service. Hence, the students must participate in activities that will help them clarify their career goals and guide them toward the undergraduate degree program that's the best fit.

“We are not looking at just the student's academic record, although that's obviously important,” says Drew Riley, associate dean of admission for Colgate University in New York. Generally, Riley says he's looking for students who will contribute to university life beyond the classroom.

In addition to the popular school activities, high school students who undertook a personal project often impress colleges because their commitment to a successful solo initiative conveys self-discipline and creativity.

High school students who have had a strong positive influence on their community through an extracurricular activity successfully demonstrate a conscious student who is future-ready. The admissions team analyses if a student identified a gap in the community and went on to creatively solve the problem. The activities must display the grit necessary to succeed both academically and professionally.

Essentially, the admission team is looking for a combination of intelligence and discipline in the student that must reflect through their academic performance and their unique set of extracurricular activities.



# What looks good on a university application?

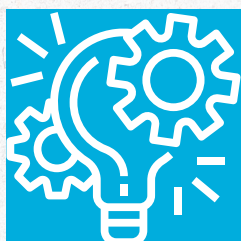
Academics are an important part of the application, but admissions also want to know what you're like outside the classroom. The Activities section of the application offers the Admissions Committee a glimpse into what excites you, what you're **PASSION** about, what responsibilities you have at home, and some of the ways you're **CONTRIBUTING** to your community.

## Analysing different components



### COMPETITIONS WON & AWARDS GRANTED

The proof of a dedicated student relies on the fact as to whether or not they have received accolades. From the awards in school to chess competitions and science prizes, attempt to showcase achievements and it demonstrates endurance, application, skill, and how you face competition. The recognition received is a tool for the admissions team to gauge your expertise and correlate it to what you would accomplish at the university



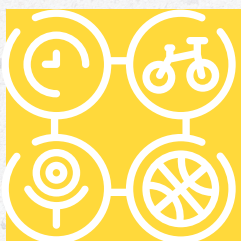
### PROJECT UNDERTAKEN

Projects undertaken both at school and outside is a great way to show that you have what it takes to see a big project through to its end. It is a tool for admissions to gauge whether or not you are ready for the extra academic work that is expected at the university. A relevant project also demonstrates your extended knowledge of the subject. A community project demonstrates your involvement in the community and your sense of responsibility. It shows that you would be a responsible citizen in the future that reflects well on their university.



### INTEREST BEYOND THE SCHOOL ENVIRONMENT

The universities strive to see is your interest in the world beyond the classroom. If everything has been spoon-fed to you by your subject teachers, it will be difficult for universities to think of you as someone who will thrive with the independence that universities offer to your studies. The ability to talk about things beyond the walls of the classroom is crucial. Use the activities section to show your interests outside the classroom and your determination to excel in it.



### EXTRACURRICULAR ACTIVITIES

Taking part in clubs, sports teams, and activities with others is very important to mention on your application form. The activities distinguish you from other applicants and also reflect on the skills that you have honed by pursuing those activities. The activities illustrate relevant skill sets hence is an important aspect for the admissions team to consider.



# COLLEGE PLANNING

## PLAN THE EXTRA-CURRICULAR ACTIVITIES

### ACADEMIC ACTIVITIES

PSAT  
Portfolio - Arts/Music  
Olympiad

### GRADE 11 EXTRA-CURRICULAR ACTIVITIES

- Communication Skills - MUN/Debating
- Writing Skills - Publications/Magazine
- Sports - School/National/International
- Hobby - School/Outside
- Community Service - 40 Hours
- Internship - Summer & Winter Break
- Additional Courses - Edx/Coursera
- Workshop - Academic
- Business Idea - Self Design Project
- Social Media Platform - Social Work
- Fund Raiser

### ACADEMIC ACTIVITIES

SAT - 2nd attempt May-June  
ACT - 2nd attempt April - June  
Advanced Placement Subjects - May  
Advanced Courses - Course relevant  
Research project - Complete and Publish  
Portfolio - Arts/Music

### GRADE 12 (SEPT - JAN) EXTRA - CURRICULAR ACTIVITIES

- Sports National/International
- Business Idea - Design Project
- Research Project - Submit and publish
- Fund Raiser

### GRADE 10 EXTRA-CURRICULAR ACTIVITIES

- Communication Skill Building - MUN/Debating/Theatre
- Leadership Building - Sports/Hobby
- Sports - School/National/International

### ACADEMIC ACTIVITIES

SAT - 1st attempt Oct-Dec  
ACT - 1st attempt Sept- Dec  
Advanced Placement Subjects - May  
Advanced Courses - Course relevant  
Research project - Identify and Begin  
Portfolio - Arts/Music

### GRADE 12 (MARCH - AUGUST) EXTRA - CURRICULAR ACTIVITIES

- Sports National/International
- Communication Skills - MUN/Debating
- Writing Skills Publications/Magazine
- Hobby - School/Outside
- Community Service - if not done 40 hours
- Internship - Summer Break
- Additional Courses - Edx/Coursera etc
- Workshop - Academic
- Business Idea - Self Design Project
- Social Media Platform - Social Work
- Fund Raiser



You can share your interests and who you are outside of the classroom in the activities section. You can share information about things like work, hobbies, clubs, and community engagement. And don't forget, family responsibilities can be important to share as well. This is the place to show colleges what makes you unique.

# ACTIVITY SHEET CHECKLIST

ACTIVITY	Grade 10	Grade 11	Grade 12
<b>Academic Advanced Courses</b>	Certificate	Certificate	Certificate
<b>Art/Dance/Music</b>	Professional Certificate	Professional Certificate	
<b>Athletics</b>	School/ Nationals	School/ Nationals	School/ Nationals
<b>Business Project/ Career Oriented</b>		Ideate & Launch	Project Report
<b>Journalism/ Publication</b>	Pursue	Publish	Publish
<b>Community Service Volunteer</b>	Summer/Winter 2-4 weeks	Summer 2-4 weeks	
<b>Debate/Speech</b>	Pursue	Pursue	Pursue
<b>Summer School/ Foreign Exchange</b>		Summer 2-4 weeks	Summer Break 2 weeks
<b>Environmental</b>	Certificate	Certificate	
<b>Family Responsibilities</b>	Record	Record	Record
<b>Research</b>		Identify	Publish
<b>Theatre/Drama</b>	Pursue	Pursue	Pursue
<b>Robotics/ Computer Tech</b>	Certificate	Professional Course	Professional Course
<b>Science/Maths Olympiads etc.</b>	Certificate	Certificate	
<b>Student Govt/ Politics</b>	Certificate	Certificate	



66

*At UCLA we're looking for more than just straight -A students. We seek students with unique stories whose rich experience brings the type of perspective and leadership that we value. UCLA receives the most admission applications of any university in the United States. Our admissions requirements are also among the most selective in the nation – UCLA Admissions*

99

## Admission Review Process at UCLA

Our comprehensive admission review process is based upon the 13 criteria approved by our faculty. These criteria include both quantitative and qualitative, academic and personal accomplishments by the student along with consideration of the context of those accomplishments and opportunities afforded to the student.

The applicant's full record of achievement in college preparatory work in high school. This includes the number and rigour of courses taken and grades earned in those courses. We also consider performance in honours, college-level, Advanced Placement (AP), and International Baccalaureate Higher Level (IBHL) courses to the extent that such courses are available to the applicant.

### Personal qualities of the applicant

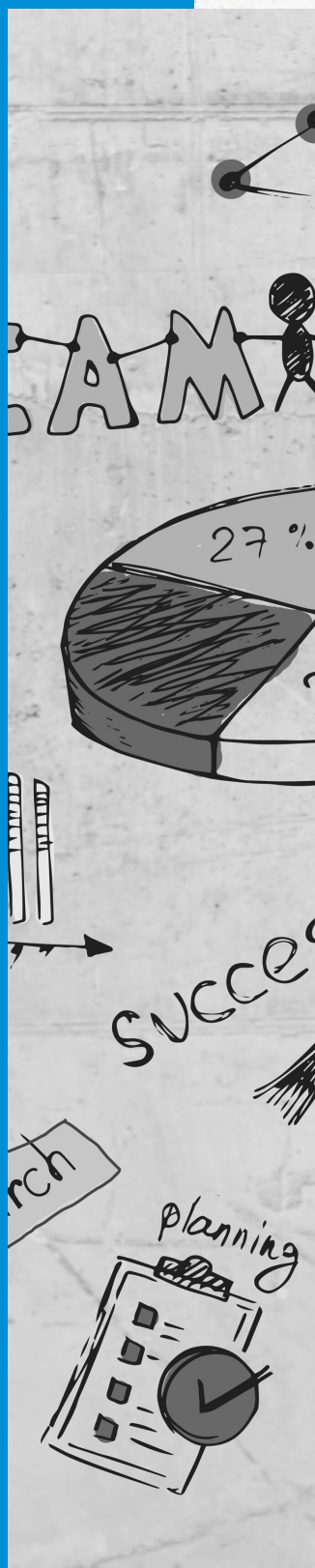
We value leadership ability, character, motivation, tenacity, initiative, originality, creativity, intellectual independence, responsibility, insight, maturity, and demonstrated concern for others and the community. We consider these qualities to be positive indicators of the student's ability to succeed at UCLA and beyond.

### Likely contributions to the intellectual and cultural vitality of the campus

We look for a broad range of intellectual interests and achievements. We value evidence of ability and desire to contribute to the campus, and its diversity.

### Achievement in academic enrichment programs

This includes University of California programs as well as other national and local programs. We measure achievement through Time and depth of participation and academic progress.







**Achievement in academic enrichment programs**  
**This includes University of California programs as well as other national and local programs. We measure achievement through Time and depth of participation and academic progress.**

### **Other evidence of achievement**

We recognize exemplary, sustained achievement in any field of intellectual or creative endeavour. Examples include accomplishments in the performing arts and athletics; employment; leadership in school or community organizations or activities; and community service.

### **Opportunities**

We consider all achievements, both academic and non-academic, in the context of the applicant's actual opportunities. When they can, readers compare the achievements of students in the same applicant pool who attended the same high school. These applicants are likely to have similar opportunities to achieve.

### **Challenges**

Some applicants have faced hardships or unusual circumstances. Readers consider the way the applicant has responded to or overcome such challenges. They look for evidence of maturity, determination and insight. Readers also consider other factors that bear directly on the applicant's achievement. Some of these factors are the language spoken in the home and the parents' education level.

## **FALL 2021 FRESHMAN ADMIT PROFILE\***

	International	All
Total Number of Applicants	21,862	139,488
Average unweighted GPA	3.96	3.95
Accepted Rate	9%	11%
Average TOEFL	113	N/A
SAT Composite**	1370-1500	1120 - 1420

\*Fall 2021 Admit figures as of mid-summer

\*\* Previous Year Data



# IPC, Gulf

MAKE A DIFFERENCE

## Why IPC, Gulf?

International Placwell Consultants Gulf has worked in the field of Education Management since 2003. Licenced by the Ministry of Education Abu Dhabi and KHDA, we are official representatives to many top-ranked universities of the world.

Our experienced team of specialist consultants possesses a comprehensive understanding of academic institutions, current information on the latest developments and a sound understanding of the issues concerning academic, personal and financial matters. Our team provides students with expert and highly informed support in every aspect of their applications to simplify the competitive and complex application process. The process is personalised after comprehensive student profiling and thorough personalised counselling.



## EDUCATION COUNSELLING

Education Counselling is done through in-person and offline sessions and the use of differential tools. The experienced counsellors provide personal advice and counselling to the students to promote an informed choice.



## SKILL DEVELOPMENT PLAN

Once the Skill Gap is ascertained a SKILL DEVELOPMENT PLAN is created for the student that allows them a glimpse into what is expected and their journey ahead.

The admissions team looks at each student as a whole package, a combination of talents, interests, passions, and skills. In this way, they look beyond grades and test scores to recruit the most dynamic group of students possible. A wide variety of backgrounds, intellectual passions, and interests make up the typical applicant. The team at IPC, Gulf identifies the activities and academic interests to pursue through the Skill Development Plan that promises to have a positive impact on the admissions team.



## APPLICATION PROCESS

Our experienced team of specialist consultants possesses a comprehensive understanding of academic institutions, current information on the latest developments and a sound understanding of the issues concerning academic, personal and financial matters. Our team provides students with expert and highly informed support in every aspect of their applications to simplify the competitive and complex application process.



College Essays



Documentation



Statement of Purpose



Visa Counselling



Letter of Recommendation



Accommodation



# IPC, Gulf

## PROFILE BUILDING

### IPC, GULF enables you to build a distinguished profile

Most universities expect the students to indicate their passion and interest in the subject by undertaking projects in addition to their academic requirements. The career exploration activity helps students demonstrate self-awareness and maturity in their undergraduate applications, thus creating the desired distinction in the application.

The EXTRA-CURRICULAR profile needs to be built in addition to enhancing the SKILLSET of the students enabling them to reach the University of their choice.

IPC, Gulf provides several options to the students to ensure that they build an impressive portfolio to create an impactful university application thereby increasing their chances of reaching the desired university.

The experienced team identify and design the activities as per the students' need and interest.

IPC, Gulf undertakes all aspects of university application with personalised attention and mentoring.



### Skill Gap

When a student walks in the door, IPC team gets busy understanding the STUDENT's ASPIRATIONS. An honest attempt is made to match the student skill set to the universities, thus arriving at the SKILL GAP.



### Roadmap

IIPC, Gulf will identify the potential roadmap for the student after evaluating the existing credentials. We help identify the skills and achievements needed to create an enviable profile. To provide a clear view of their journey ahead a REAL TIMELINE and ROADMAP is crafted.



### Art Portfolio

IPC, Gulf represents several art colleges and are equipped to guide the students for the Art portfolio. We assist the students to choose the right course and ensure that the portfolio is crafted adhering to the strictest guidelines as set by the universities and colleges.



### Counselling

Counselling concentrates on EMPOWERING the students with updated knowledge about career options which are futuristic and one that matches their skill set.



### Profile Building

Create a plan and strategy for admissions success with a compelling application showcasing a WORTHY list of Extra-Curricular activities. IPC team helps you identify the right activities that include:

### Community Service

### Research Paper

### Internship / Work

### Cultural Activities

### Athletics/Sports

### Debate/Speech

### Publication

### Foreign Exchange

### Robotics / Coding

### Career Orientation





How do you engage with your community- academic, personal, and social? What personal qualities do you possess that would make you a good fit for our campus? Universities look for students who are eager to follow their interests at the college level and are enthusiastic about joining the campus community.

# READY TO APPLY?

## NAVIGATE THE PROCESS WITH IPC, GULF



INTERNATIONAL PLACEWELL CONSULTANTS, GULF



+971 4 3911178/79



[www.unidirection.com](http://www.unidirection.com)



Block 13, Office F-18

Dubai Knowledge Park



[dubai@unidirection.com](mailto:dubai@unidirection.com)